



DIN Rail Digital Watt-Hour Meter

D52-2047 is DIN Rail digital Watt-Hour panel meter for measuring AC voltage, AC current, Power, Watt-Hour and Power Factor in the same package. It does not require external power supply, compact and very convenient for accurate AC measurement. Standard DIN Rail mountable. This Watt-Hour meter to be used with external current sense transformer (CT) for easy mounting.



SKU: [INS1015](#)

Brief Data:

- Accuracy: 1%, ± 2 digits.
- Voltage Range: AC 80~300V.
- Current Range: AC 0~100A.
- Cumulative Time: 0~999.59h.
- Active Power Range: 0~30000W.
- Power Factor Range: 1.000~0.000.
- Electric Energy Range: 0~99999kwh.
- Dimension: 64x54x80 mm.
- Package Weight: 143g / 5oz.

Note: This instrument is only suitable for pure AC 50~60Hz power supply. Cannot measure on square wave, inverter output, otherwise the instrument will be damaged!

Mechanical Dimension:

Unit: mm



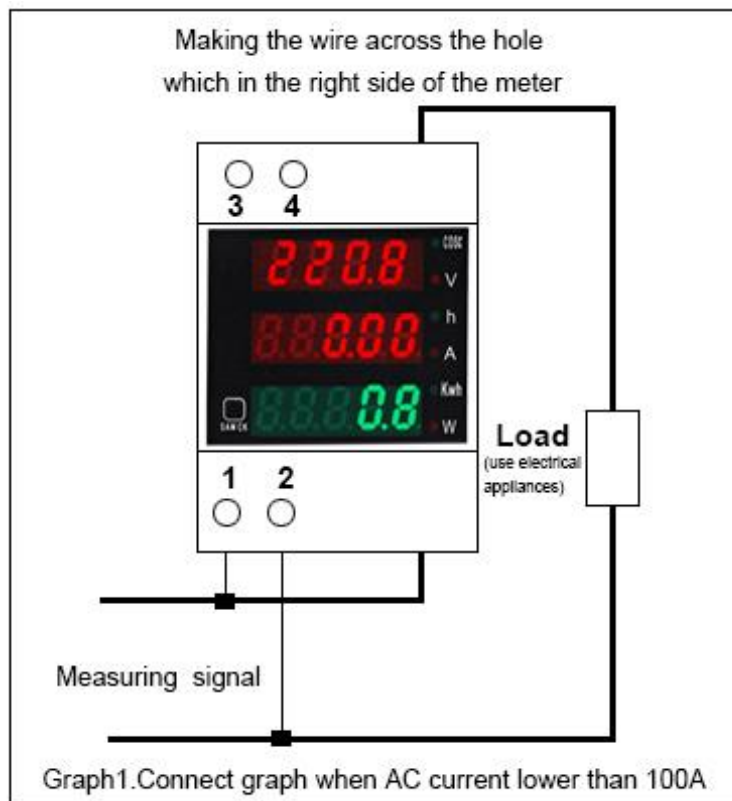
Functional Diagram:



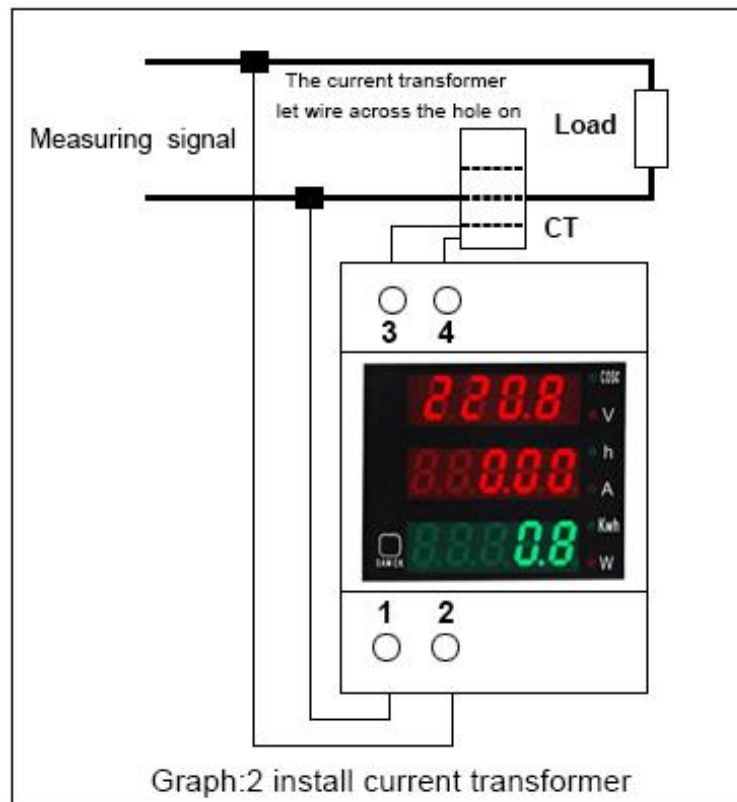
“Switch Button” Function:

- Push the “Switch Button” to toggle the display between “COS ϕ /V”, “Hour/A” and “KWh/W”.
- Long Press of “Switch Button” for ~5sec will reset the KWh & h to 0000 reading.

Wiring Diagram:

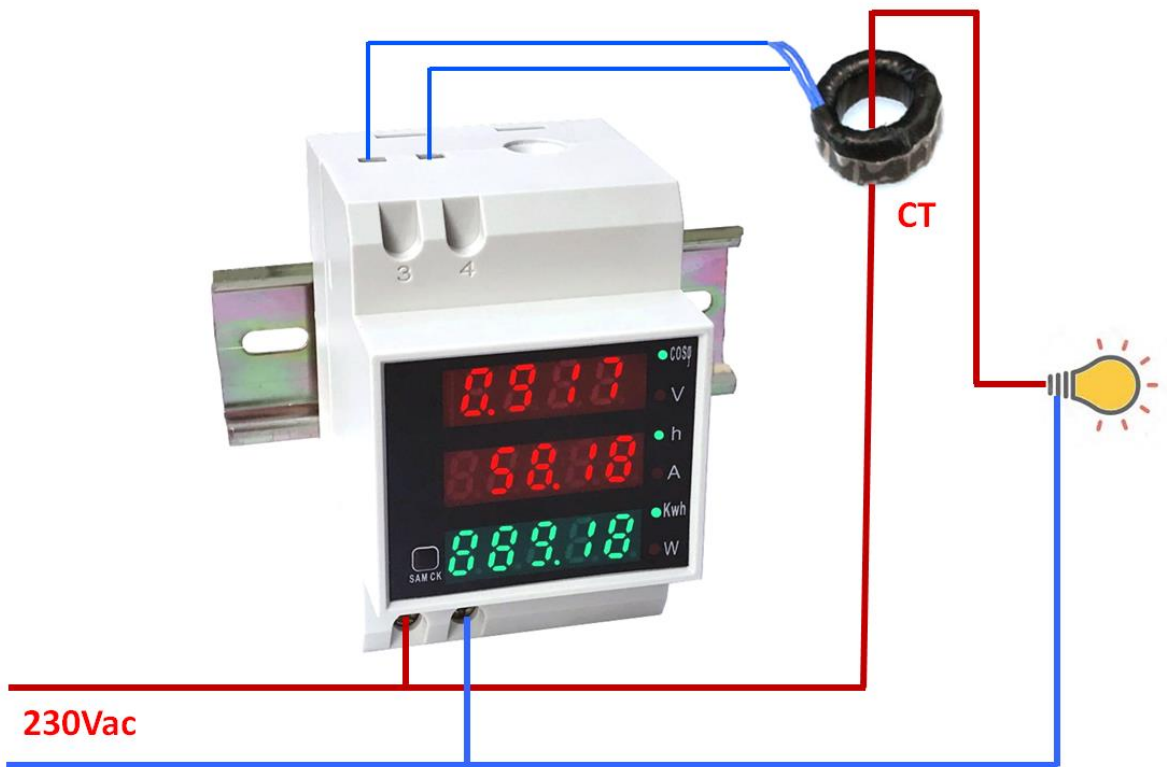


With Built-in Current Transformer (CT)



With external Current Transformer (CT)

Connecting Diagram:





Handsontec.com

We have the parts for your ideas

HandsOn Technology provides a multimedia and interactive platform for everyone interested in electronics. From beginner to diehard, from student to lecturer. Information, education, inspiration and entertainment. Analog and digital, practical and theoretical; software and hardware.



open source
hardware

HandsOn Technology support Open Source Hardware (OSHW) Development Platform.

Learn : Design : Share

handsontec.com



The Face behind our product quality...

In a world of constant change and continuous technological development, a new or replacement product is never far away – and they all need to be tested.

Many vendors simply import and sell without checks and this cannot be the ultimate interests of anyone, particularly the customer. Every part sell on Handsotec is fully tested. So when buying from Handsotec products range, you can be confident you're getting outstanding quality and value.

We keep adding the new parts so that you can get rolling on your next project.



www.handsontec.com

[Breakout Boards & Modules](#)



[Connectors](#)



www.handsontec.com

[Electro-Mechanical Parts](#)



www.handsontec.com

[Engineering Material](#)



www.handsontec.com

[Mechanical Hardware](#)



[Electronics Components](#)

P



www.handsontec.com

[Power Supply](#)



[Arduino Board & Shield](#)

Tools & Accessory



www.handsontec.com

[Tools & Accessory](#)