



Handson Technology

Products Catalogue
January 2018 Edition

Engineering Material 2018



Open Source Electronics Platform

www.handsontec.com

Our Local Outlet:

- <http://handson28.lelong.my>
- <http://www.logon.my/stores/handson-tech>

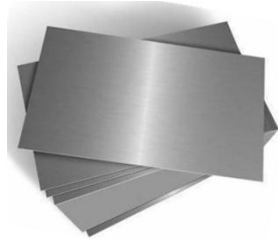
Table of Contents

Engineering Material	3
5052H32 Aluminum Alloy Sheet	3
L Joining Plate for 2020 Aluminum Profile	3
3030 Roll-In T-Nuts with Leaf Spring	3
20TN Drop-in Tee Nut	3
FB6061 Aluminum Flat Bar/0.5x1.25 Inch	3
Ø3mm Hollow Brass Tubing	3
20x28mm Right Angle Bracket	4
2020 P5 Series Aluminum Profile	4
RD6061 Aluminium Alloy Rod	4
FB6061 Aluminum Square Flat Bar	4
2040 P5 Series Aluminum Profile	4
35x28mm Right Angle Bracket	4
Aluminum Spacer Ø10mm	5
Harden Chrome Smooth Linear Shaft Ø10mm	5

Engineering Material

5052H32 Aluminum Alloy Sheet

Aluminum alloy 5052 in H32 temper has very good corrosion resistance to seawater and marine and industrial atmosphere. It also has very good weld ability and good cold formability.



Size: 200mm x 250mm

Thickness: 3 ~ 5mm

MCH-1003	5052H3203-3mm	RM 21.00
MCH-1004	5052H3204-4mm	RM 30.00
MCH-1005	5052H3205-5mm	RM 38.00

3030 Roll-In T-Nuts with Leaf Spring

An essential part for working with slotted aluminum extrusion. These slim metal nuts slide into the side-slot of the extrusion. Suitable for 30/40 Profile.



5-pcs/lot.

MCH-1115	3030M5TN	RM 5.60
-----------------	-----------------	----------------

FB6061 Aluminum Flat Bar/0.5x1.25 Inch

FB6061 Aluminum Flat bar, is an extruded aluminum product that is very versatile and has a wide range of applications. FB6061 Aluminum Flat Bar is widely used for all types of fabrication projects where lightweight and corrosion resistance is a concern.



MCH-1177	FB6061-1332	RM 16.80
-----------------	--------------------	-----------------

L Joining Plate for 2020 Aluminum Profile

These aluminum plates allow you to join standard 20mm T-slot/T-slot aluminum extrusion profile at a 90 degree angle. The holes are spaced 25mm apart on each arm, allowing them to be used in the slots or in tapped holes on the edges of 20mm extrusion.



MCH-1115	HT-90PLT	RM 2.80
-----------------	-----------------	----------------

20TN Drop-in Tee Nut

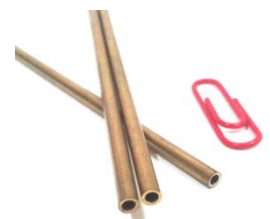
These are post insertion Tee Nuts that can be added anywhere along the slot of compatible extrusions/profile. These Drop-In Tee Nuts are great to have on hand because they do not need to be placed in from the ends of the extrusion.



MCH-1180	20TN-M5	RM 3.50
-----------------	----------------	----------------

Ø3mm Hollow Brass Tubing

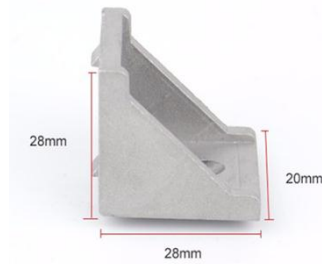
Round Seamless Brass tubing is commonly used for architectural detail and industrial design elements. Alloys are comparable in strength, formability and weld ability. Length: 200mm



MCH-1106	HT-3020BT	RM 8.80
-----------------	------------------	----------------

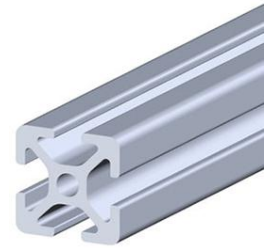
20x28mm Right Angle Bracket

(28x28x20)mm Right Angle Bracket for Aluminum Extrusion. Suitable with aluminum profile size of 20x20mm, 20x40mm.



2020 P5 Series Aluminum Profile

Series P5 aluminum profiles are generally based on 20mm core dimensions, with a 5mm slot that allows a maximum slot nut thread of M5, these aluminum extrusions are used for small, light precision applications such as sensor supports, 3D printer, CNC machine and robotic linear motion.



<u>MCH-1098</u>	<u>2820R90BRK</u>	<u>RM 3.20</u>
------------------------	--------------------------	-----------------------

<u>MCH-1132</u>	<u>AL-P5-2020-60</u>	<u>RM 24.00</u>
------------------------	-----------------------------	------------------------

RD6061 Aluminium Alloy Rod

RD6061 Aluminum Round Rod is widely used for all types of engineering fabrication projects where lightweight and corrosion resistance is a concern. Lightweight and easy to work with, easy to drill, rivet and screw.
Diameter: Ø0.625" ~ Ø0.875"
Length: 300mm



FB6061 Aluminum Square Flat Bar

FB6061 Aluminum flat bar is widely used for all types of engineering fabrication projects where lightweight and corrosion resistance is a concern. Lightweight and easy to work with, easy to drill, rivet and screw.
Size: 0.5" ~ 1.00".
Length: 300mm



<u>MCH-1002</u>	<u>RD6061-Ø625</u>	<u>RM 9.00</u>
<u>MCH-1218</u>	<u>RD6061-Ø750</u>	<u>RM 12.00</u>
<u>MCH-1232</u>	<u>RD6061-Ø875</u>	<u>RM14.00</u>

<u>MCH-1233</u>	<u>FB6061-SQ100</u>	<u>RM 25.00</u>
<u>MCH-1231</u>	<u>FB6061-SQ050</u>	<u>RM 10.00</u>

2040 P5 Series Aluminum Profile

Series P5 aluminum profiles are generally based on 20mm core dimensions, with a 5mm slot that allows a maximum slot nut thread of M5, these aluminum extrusions are used for small, light precision applications such as sensor supports, 3D printer, CNC machine and robotic linear motion.



Length: 600mm

35x28mm Right Angle Bracket

(35x35x28)mm Right Angle Bracket for Aluminum Extrusion. Suitable with aluminum profile size of 20x20mm, 20x40mm.



<u>MCH-1191</u>	<u>AL-P5-2040-60</u>	<u>RM 30.00</u>
------------------------	-----------------------------	------------------------

<u>MCH-1202</u>	<u>HT3610</u>	<u>RM 3.80</u>
------------------------	----------------------	-----------------------

Aluminum Spacer Ø10mm

This Aluminum Spacers are precision engineered aluminum alloy standoffs with Ø10mm outside diameter. These metal spacers have an inside hole diameter of Ø5.2mm to accommodate M5 screws and bolts.



<u>MCH-1242</u>	<u>AL-SP0503</u>	<u>RM 0.50</u>
<u>MCH-1174</u>	<u>AL-SP0506</u>	<u>RM 1.00</u>
<u>MCH-1243</u>	<u>AL-SP0509</u>	<u>RM 1.50</u>

Harden Chrome Smooth Linear Shaft Ø10mm

Linear Shafts have high surface hardness, exceptional straightness and smooth surface finish which are the basic needs for linear ball bushing application. Ideal for robotic, 3D printers and CNC router machine.



<u>MCH-1017</u>	<u>LMS10</u>	<u>RM 36.00</u>
-----------------	--------------	-----------------



Handsontec.com

We have the parts for your ideas

HandsOn Technology provides a multimedia and interactive platform for everyone interested in electronics. From beginner to diehard, from student to lecturer. Information, education, inspiration and entertainment. Analog and digital, practical and theoretical; software and hardware.



open source
hardware

HandsOn Technology support Open Source Hardware (OSHW) Development Platform.

Learn : Design : Share

www.handsontec.com

The Face behind our product quality...

In a world of constant change and continuous technological development, a new or replacement product is never far away – and they all need to be tested and qualified.

Many vendors simply import and sell without checks and this cannot be the ultimate interests of anyone, particularly the customer. Every part sell on Handsotec is fully tested. So when buying from Handsotec products range, you can be confident you're getting outstanding quality and value.

We keep adding the new parts so that you can get rolling on your next project.



www.handsontec.com

[Breakout Boards & Modules](#)



[Connectors](#)



www.handsontec.com

[Electro-Mechanical Parts](#)



www.handsontec.com

[Engineering Material](#)



www.handsontec.com

[Mechanical Hardware](#)



[Electronics Components](#)

P



www.handsontec.com

[Power Supply](#)



[Arduino Board & Shield](#)

Tools & Accessory



www.handsontec.com

[Tools & Accessory](#)