



Metric A2 Hex Socket Head Screws

These hexagon head socket cap screws have a narrow head and are perfect for use in hard to reach areas. The fasteners are good in machine repair and maintenance and in many sectors including food and beverage, automotive and aerospace. This range of fasteners are produced from A2(304) Stainless Steel. A2 stainless steel provides good corrosion resistance.



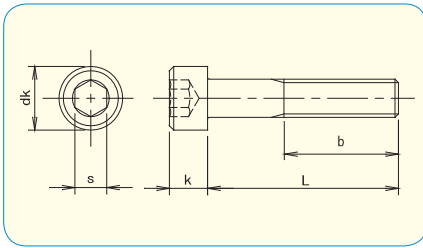
SKU: [FAS1171](#)

Brief Data:

- Product: Hex Socket Cap.
- Standard: DIN912.
- Metric Size: M2 ~ M60.
- Thread Type: Metric.
- Color: Silver.
- Material: A2 (304) Stainless Steel.
- Used for applications with limited space in high tensile applications.
- Requires a Hex key / Allen key.

NOTE: Zinc 3Cr. Plated and Black 3Cr. Plated are RoHS compliant trivalent finishes

HEX SOCKET CAP SCREW ISO 4762 / JIS B1176 / DIN 912



- **Material · plating**
 Steel 12.9 (~M20) / Black
 Steel 10.9 (M22~) / Black



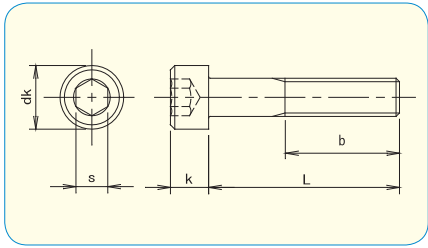
How to order or inquire: R830-912-12- diameter x length (up to M20)
 How to order or inquire: R830-912-10- diameter x length (M22 and up)
 Examples: R830-912-12 3x10, R830-912-10 24x35

| | M1.6 | M2 | M2.5 | M2.6 | M3 | M4 | M5 | M6 | M8 | M10 | M12 |
|----|------|-----|------|------|-----|----|-----|----|----|-----|-----|
| dk | 3 | 3.8 | 4.5 | 4.5 | 5.5 | 7 | 8.5 | 10 | 13 | 16 | 18 |
| k | 1.6 | 2 | 2.5 | 2.6 | 3 | 4 | 5 | 6 | 8 | 10 | 12 |
| s | 1.5 | 1.5 | 2 | 2 | 2.5 | 3 | 4 | 5 | 6 | 8 | 10 |
| b | 15 | 16 | 17 | 17 | 18 | 20 | 22 | 24 | 28 | 32 | 36 |

pcs / Box

| d L | M1.6 | M2 | M2.5 | M2.6 | M3 | M4 | M5 | M6 | M8 | M10 | M12 |
|--------|-------|-----|------|------|-----|-----|-----|-----|-----|-----|-----|
| 3 | 1,000 | 500 | 500 | 500 | 500 | | | | | | |
| 4 | 1,000 | 500 | 500 | 500 | 500 | 500 | 500 | | | | |
| 5 | 1,000 | 500 | 500 | 500 | 500 | 500 | 500 | 200 | | | |
| 6 | 1,000 | 500 | 500 | 500 | 500 | 500 | 500 | 200 | | | |
| 8 | 1,000 | 500 | 500 | 500 | 500 | 500 | 500 | 200 | 100 | | |
| 10 | 1,000 | 500 | 500 | 500 | 500 | 500 | 500 | 200 | 100 | 100 | |
| 12 | | 500 | 500 | 500 | 500 | 500 | 500 | 200 | 100 | 100 | 100 |
| 14 | | 500 | 500 | 500 | 500 | 500 | 500 | 200 | 100 | 100 | |
| 15 | | 500 | 500 | 500 | 500 | 500 | 500 | 200 | 100 | 100 | 100 |
| 16 | | 500 | 500 | 500 | 500 | 500 | 500 | 200 | 100 | 100 | 100 |
| 18 | | 500 | 500 | 500 | 500 | 500 | 500 | 200 | 100 | 100 | 100 |
| 20 | | 500 | 500 | 500 | 500 | 500 | 500 | 200 | 100 | 100 | 100 |
| 22 | | | | | 500 | 200 | 200 | 200 | 100 | 100 | 100 |
| 25 | | | | | 200 | 200 | 200 | 200 | 100 | 100 | 100 |
| 28 | | | | | 200 | 200 | 200 | 200 | 100 | 100 | 100 |
| 30 | | | | | 200 | 200 | 200 | 100 | 100 | 100 | 100 |
| 35 | | | | | 200 | 200 | 200 | 100 | 100 | 100 | 50 |
| 40 | | | | | 200 | 200 | 200 | 100 | 100 | 100 | 50 |
| 45 | | | | | 200 | 200 | 200 | 100 | 100 | 100 | 50 |
| 50 | | | | | 200 | 200 | 200 | 100 | 100 | 50 | 50 |
| 55 | | | | | | 200 | 200 | 100 | 100 | 50 | 50 |
| 60 | | | | | | 200 | 200 | 100 | 100 | 50 | 50 |
| 65 | | | | | | 200 | 200 | 100 | 100 | 50 | 50 |
| 70 | | | | | | 200 | 200 | 100 | 100 | 50 | 50 |
| 75 | | | | | | | | 100 | 100 | 50 | 50 |
| 80 | | | | | | | | 100 | 100 | 50 | 50 |
| 85 | | | | | | | | 100 | 100 | 50 | 50 |
| 90 | | | | | | | | 100 | 100 | 50 | 25 |
| 95 | | | | | | | | 100 | 50 | 50 | 25 |
| 100 | | | | | | | | 100 | 50 | 50 | 25 |
| 105 | | | | | | | | | 50 | 50 | 25 |
| 110 | | | | | 300 | | | | 50 | 50 | 25 |
| 115 | | | | | | | | | 50 | 50 | 25 |
| 120 | | | | | | | | | 50 | 50 | 25 |
| 125 | | | | | | | | | 50 | 25 | 25 |
| 130 | | | | | | | | | 50 | 25 | 25 |
| 140 | | | | | | | | | 50 | 25 | 25 |
| 150 | | | | | | | | | 50 | 30 | 25 |
| 155 | | | | | | | | | | | |
| 160 | | | | | | | | | | 30 | 25 |
| 165 | | | | | | | | | | | |
| 170 | | | | | | | | | | 30 | 25 |
| 180 | | | | | | | | | | 30 | 25 |
| 190 | | | | | | | | | | 30 | 25 |
| 200 | | | | | | | | | | 30 | 25 |

HEX SOCKET CAP SCREW ISO 4762 / JIS B1176 / DIN 912



- **Material · plating**
 Steel 12.9 (~M20) / Black
 Steel 10.9 (M22~) / Black



How to order or inquire: R830-912-12- diameter x length (up to M20)
 How to order or inquire: R830-912-10- diameter x length (M22 and up)
 Examples: R830-912-12 3x10, R830-912-10 24x35

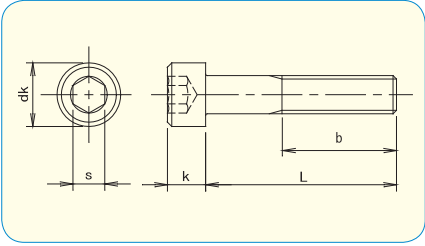
| | M1.6 | M2 | M2.5 | M2.6 | M3 | M4 | M5 | M6 | M8 | M10 | M12 |
|----|------|-----|------|------|-----|----|-----|----|----|-----|-----|
| dk | 3 | 3.8 | 4.5 | 4.5 | 5.5 | 7 | 8.5 | 10 | 13 | 16 | 18 |
| k | 1.6 | 2 | 2.5 | 2.6 | 3 | 4 | 5 | 6 | 8 | 10 | 12 |
| s | 1.5 | 1.5 | 2 | 2 | 2.5 | 3 | 4 | 5 | 6 | 8 | 10 |
| b | 15 | 16 | 17 | 17 | 18 | 20 | 22 | 24 | 28 | 32 | 36 |

| | M14 | M16 | M20 | M24 | M36 |
|----|-----|-----|-----|-----|-----|
| dk | 21 | 24 | 30 | 36 | 54 |
| k | 14 | 16 | 20 | 24 | 36 |
| s | 12 | 14 | 17 | 19 | 27 |
| b | 40 | 44 | 52 | 60 | 84 |

| | | pcs / Box | | | | |
|-------|--|-----------|-----|-----|-----|-----|
| L \ d | | M14 | M16 | M20 | M24 | M36 |
| 20 | | 50 | | | | |
| 25 | | 50 | 50 | | | |
| 30 | | 50 | 50 | | 20 | |
| 35 | | 50 | 40 | | 20 | |
| 40 | | 50 | 40 | 40 | | |
| 45 | | 50 | 40 | 40 | | |
| 50 | | 50 | 30 | 35 | | |
| 55 | | 40 | 30 | 30 | | |
| 60 | | 40 | 30 | 30 | | 1 |
| 65 | | 40 | 25 | 30 | | |
| 70 | | 40 | 25 | 25 | | 1 |
| 75 | | 40 | 25 | 25 | | |
| 80 | | 40 | 25 | 25 | | 1 |
| 85 | | 30 | 25 | 25 | | |
| 90 | | 30 | 20 | 25 | | 1 |
| 95 | | 30 | 20 | 25 | | |
| 100 | | 30 | 20 | 20 | | 1 |
| 105 | | | 20 | | | |
| 110 | | | 20 | | | 1 |
| 115 | | | 15 | | | |
| 120 | | | 15 | | | 1 |
| 125 | | | 15 | | | |
| 130 | | | 15 | | | 1 |
| 140 | | | 15 | | | 1 |
| 150 | | | 15 | | | 1 |
| 160 | | | | | | 1 |
| 170 | | | | | | 1 |
| 180 | | | | | | 1 |
| 190 | | | | | | 1 |
| 200 | | | | | | 1 |
| 210 | | | | | | 1 |
| 220 | | | | | | 1 |
| 230 | | | | | | 1 |
| 240 | | | | | | 1 |
| 250 | | | | | | 1 |
| 260 | | | | | | 1 |
| 280 | | | | | | 1 |
| 300 | | | | | | 1 |

NOTE: Zinc 3Cr. Plated and Black 3Cr. Plated are RoHS compliant trivalent finishes

HEX SOCKET CAP SCREW ISO 4762 / JIS B1176 / DIN 912



- **Material · plating**
 Steel 10.9 / Zinc 3Cr. Plated
 Steel 10.9 / Zinc Black 3Cr. Plated



How to order or inquire: R830-912-10-finish code diameter x length

Example: R830-912-10-CR3 4x10

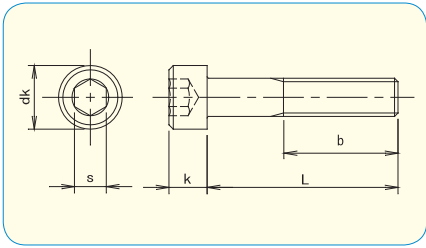
Finish codes: CR3 for Zinc 3Cr. Plated, CR3B for Black 3Cr. Plated

| | M2 | M2.5 | M2.6 | M3 | M4 | M5 | M6 | M8 | M10 | M12 |
|----|-----|------|------|-----|----|-----|----|----|-----|-----|
| dk | 3.8 | 4.5 | 4.5 | 5.5 | 7 | 8.5 | 10 | 13 | 16 | 18 |
| k | 2 | 2.5 | 2.6 | 3 | 4 | 5 | 6 | 8 | 10 | 12 |
| s | 1.5 | 2 | 2 | 2.5 | 3 | 4 | 5 | 6 | 8 | 10 |
| b | 16 | 17 | 17 | 18 | 20 | 22 | 24 | 28 | 32 | 36 |



| L \ d | pcs / Box | | | | | | | | | |
|-------|-----------|------|------|-----|-----|-----|-----|-----|-----|-----|
| | M2 | M2.5 | M2.6 | M3 | M4 | M5 | M6 | M8 | M10 | M12 |
| 3 | 500 | 500 | 500 | 500 | | | | | | |
| 4 | 500 | 500 | 500 | 500 | 500 | | | | | |
| 5 | 500 | 500 | 500 | 500 | 500 | 500 | | | | |
| 6 | 500 | 500 | 500 | 500 | 500 | 500 | 500 | | | |
| 8 | 500 | 500 | 500 | 500 | 500 | 500 | 500 | | | |
| 10 | 500 | 500 | 500 | 500 | 500 | 500 | 500 | 100 | 100 | |
| 12 | 500 | 500 | 500 | 500 | 500 | 500 | 500 | 100 | 100 | |
| 14 | 500 | 500 | 500 | 500 | 500 | 500 | 500 | 100 | 100 | |
| 15 | 500 | 500 | 500 | 500 | 500 | 200 | 200 | 100 | 100 | |
| 16 | 500 | 500 | 500 | 500 | 500 | 200 | 200 | 100 | 100 | |
| 18 | 500 | 500 | 500 | 500 | 500 | 200 | 200 | 100 | 100 | |
| 20 | 500 | 500 | 500 | 500 | 200 | 200 | 200 | 100 | 100 | |
| 25 | | 500 | | 500 | 200 | 200 | 200 | 100 | 100 | 50 |
| 30 | | | | 500 | 200 | 200 | 200 | 100 | 50 | 50 |
| 35 | | | | 500 | 200 | 200 | 100 | 100 | 50 | 50 |
| 40 | | | | 500 | 200 | 200 | 100 | 100 | 50 | 50 |
| 45 | | | | 500 | 200 | 200 | 100 | 100 | 50 | 50 |
| 50 | | | | 200 | 200 | 200 | 100 | 100 | 50 | |
| 55 | | | | 200 | 200 | 200 | 100 | 50 | 50 | |
| 60 | | | | 200 | 200 | 200 | 100 | 50 | 50 | 40 |
| 65 | | | | | | 200 | 100 | | | |
| 70 | | | | | 200 | 200 | 100 | | 50 | |
| 75 | | | | | 200 | | 100 | | | |
| 80 | | | | | | 100 | 100 | | | |
| 85 | | | | | 100 | | | | | |
| 90 | | | | | | | 100 | | | |
| 100 | | | | | | | 100 | 50 | 30 | |
| 110 | | | | | | | | | | |
| 120 | | | | | | | | 50 | | |

HEX SOCKET CAP SCREW ISO 4762 / JIS B1176 / DIN 912



● **Material**
Stainless Steel A2



How to order or inquire: R830-DIN 912A2 diameter x length

Example: R830-DIN 912A2 4x16

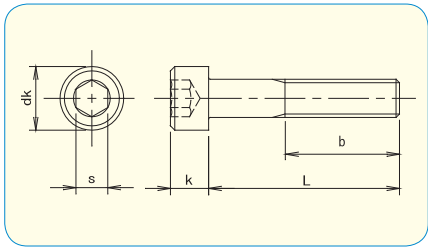
Material codes: A2 for Stainless Steel A2

| | M1.6 | M2 | M2.5 | M2.6 | M3 | M4 | M5 | M6 | M8 | M10 |
|----|------|-----|------|------|-----|----|-----|----|----|-----|
| dk | 3 | 3.8 | 4.5 | 4.5 | 5.5 | 7 | 8.5 | 10 | 13 | 16 |
| k | 1.6 | 2 | 2.5 | 2.6 | 3 | 4 | 5 | 6 | 8 | 10 |
| s | 1.5 | 1.5 | 2 | 2 | 2.5 | 3 | 4 | 5 | 6 | 8 |
| b | 15 | 16 | 17 | 17 | 18 | 20 | 22 | 24 | 28 | 32 |



| | | pcs / Box | | | | | | | | | |
|-------|-------|-----------|-------|-------|-------|-------|-----|-----|-----|-----|--|
| L \ d | M1.6 | M2 | M2.5 | M2.6 | M3 | M4 | M5 | M6 | M8 | M10 | |
| 3 | 1,000 | 1,000 | 1,000 | 1,000 | 1,000 | | | | | | |
| 4 | 1,000 | 1,000 | 1,000 | 1,000 | 500 | 1,000 | | | | | |
| 5 | 1,000 | 1,000 | 1,000 | 1,000 | 500 | 500 | 500 | | | | |
| 6 | 1,000 | 1,000 | 1,000 | 1,000 | 500 | 500 | 500 | 500 | | | |
| 8 | 1,000 | 1,000 | 1,000 | 1,000 | 500 | 500 | 500 | 200 | 100 | | |
| 10 | 1,000 | 1,000 | 1,000 | 1,000 | 500 | 500 | 500 | 200 | 100 | 100 | |
| 12 | 1,000 | 1,000 | 1,000 | 1,000 | 500 | 500 | 500 | 200 | 100 | 100 | |
| 14 | | 1,000 | 1,000 | 1,000 | 500 | 500 | 500 | 200 | 100 | 100 | |
| 15 | | 1,000 | 1,000 | 1,000 | 500 | 500 | 500 | 200 | 100 | 100 | |
| 16 | | 1,000 | 1,000 | 1,000 | 500 | 500 | 200 | 200 | 100 | 100 | |
| 18 | | 1,000 | 1,000 | 1,000 | 500 | 500 | 200 | 200 | 100 | 100 | |
| 20 | | 1,000 | 1,000 | 1,000 | 500 | 500 | 200 | 200 | 100 | 100 | |
| 22 | | | | | 200 | 500 | 200 | 200 | 100 | 100 | |
| 25 | | 1,000 | 1,000 | 1,000 | 200 | 500 | 200 | 200 | 100 | 100 | |
| 28 | | | | | 200 | 200 | 200 | 200 | 100 | 100 | |
| 30 | | 1,000 | 1,000 | 1,000 | 200 | 200 | 200 | 200 | 100 | 50 | |
| 35 | | | | | 200 | 200 | 200 | 200 | 100 | 50 | |
| 40 | | 1,000 | 1,000 | 1,000 | 200 | 200 | 200 | 200 | 100 | 50 | |
| 45 | | | | | 200 | 200 | 100 | 200 | 100 | 50 | |
| 50 | | | | | 200 | 200 | 100 | 200 | 100 | 50 | |
| 55 | | | | | 200 | 200 | 100 | 100 | 50 | 50 | |
| 60 | | | | | 200 | 200 | 100 | 100 | 50 | 50 | |
| 65 | | | | | 200 | 200 | 100 | 100 | 50 | 50 | |
| 70 | | | | | 200 | 200 | 100 | 100 | 50 | 40 | |
| 75 | | | | | 200 | 200 | 100 | 100 | 50 | 40 | |
| 80 | | | | | 200 | 200 | 100 | 100 | 50 | 40 | |
| 85 | | | | | 200 | 200 | 100 | 100 | 50 | 40 | |
| 90 | | | | | 200 | 200 | 100 | 100 | 50 | 30 | |
| 95 | | | | | 200 | 100 | 100 | 100 | 50 | 30 | |
| 100 | | | | | 200 | 100 | 100 | 100 | 50 | 30 | |
| 105 | | | | | | | 100 | 100 | 50 | 25 | |
| 110 | | | | | | 100 | 100 | 100 | 50 | 30 | |
| 115 | | | | | | 100 | 100 | 100 | 50 | 25 | |
| 120 | | | | | | 100 | 100 | 100 | 50 | 30 | |
| 125 | | | | | | | 100 | 100 | 50 | 25 | |
| 130 | | | | | | 100 | 100 | 100 | 50 | 30 | |
| 140 | | | | | | 100 | 100 | 100 | 50 | 30 | |
| 150 | | | | | | 100 | 100 | 100 | 50 | 30 | |
| 155 | | | | | | | 100 | | 50 | 30 | |
| 160 | | | | | | | 100 | 100 | 50 | 30 | |
| 165 | | | | | | | | | | 30 | |
| 170 | | | | | | | 100 | 100 | 50 | 30 | |
| 180 | | | | | | | 100 | 100 | 70 | 30 | |
| 190 | | | | | | | 100 | 100 | 70 | 30 | |
| 200 | | | | | | | 100 | 100 | 70 | 30 | |
| 210 | | | | | | | | | 70 | | |
| 220 | | | | | | | | | 50 | 30 | |
| 230 | | | | | | | | | 50 | 30 | |
| 240 | | | | | | | | | | | |
| 250 | | | | | | | | | 50 | 30 | |

HEX SOCKET CAP SCREW ISO 4762 / JIS B1176 / DIN 912



● **Material**
Stainless Steel A2



How to order or inquire: R830-DIN 912A2 diameter x length

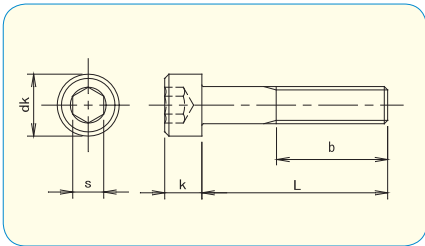
Example: R830-DIN 912A2 4x16

Material codes: A2 for Stainless Steel A2

| | M12 | M14 | M16 | M18 | M20 | M22 | M24 | M27 | M30 | M33 | M36 |
|----|-----|-----|-----|-----|-----|-----|-----|-----|-----|-----|-----|
| dk | 18 | 21 | 24 | 27 | 30 | 33 | 36 | 40 | 45 | 50 | 54 |
| k | 12 | 14 | 16 | 18 | 20 | 22 | 24 | 27 | 30 | 33 | 36 |
| s | 10 | 12 | 14 | 14 | 17 | 17 | 19 | 19 | 22 | 24 | 27 |
| b | 36 | 40 | 44 | 48 | 52 | 56 | 60 | 66 | 72 | 78 | 84 |

| | | pcs / Box | | | | | | | | | | |
|-----|----|-----------|-----|-----|-----|-----|-----|-----|-----|-----|-----|-----|
| d | L | M12 | M14 | M16 | M18 | M20 | M22 | M24 | M27 | M30 | M33 | M36 |
| 12 | 50 | | | | | | | | | | | |
| 14 | 50 | | | | | | | | | | | |
| 15 | 50 | | | | | | | | | | | |
| 16 | 50 | | | | | | | | | | | |
| 18 | 50 | | | | | | | | | | | |
| 20 | 50 | 40 | 40 | | | | | | | | | |
| 22 | 50 | | | | | | | | | | | |
| 25 | 50 | 40 | 50 | | 20 | | | | | | | |
| 30 | 50 | 40 | 50 | 10 | 20 | 15 | 5 | | | | | |
| 35 | 50 | 40 | 50 | 10 | 20 | 15 | 5 | | | | | |
| 40 | 50 | 30 | 40 | 10 | 20 | 15 | 5 | | | | | |
| 45 | 50 | 30 | 40 | 10 | 15 | 15 | 5 | | | | | |
| 50 | 40 | 30 | 40 | 10 | 15 | 15 | 5 | 5 | 4 | | | |
| 55 | 40 | 25 | 35 | 10 | 15 | 15 | 5 | 5 | 4 | | | |
| 60 | 30 | 25 | 30 | 10 | 15 | 15 | 5 | 5 | 4 | | | |
| 65 | 30 | 25 | 30 | 10 | 15 | 15 | 5 | 5 | 4 | | | |
| 70 | 30 | 25 | 30 | 10 | 15 | 15 | 5 | 5 | 4 | 1 | 1 | |
| 75 | 30 | 25 | 25 | 10 | 12 | 15 | 5 | 5 | 4 | 1 | 1 | |
| 80 | 30 | 25 | 25 | 10 | 12 | 15 | 5 | 5 | 4 | 1 | 1 | |
| 85 | 30 | 25 | 25 | 10 | 10 | 15 | 5 | 5 | 4 | 1 | 1 | |
| 90 | 25 | 25 | 25 | 10 | 10 | 15 | 5 | 5 | 4 | 1 | 1 | |
| 95 | 25 | 15 | 20 | | 10 | 15 | 5 | 5 | 4 | | 1 | |
| 100 | 25 | 15 | 20 | 10 | 10 | 15 | 5 | 5 | 4 | 1 | 1 | |
| 105 | 25 | 15 | 15 | | | 15 | 5 | | | | | |
| 110 | 20 | 15 | 15 | 10 | 10 | 15 | 5 | 5 | 4 | 1 | 1 | |
| 115 | 20 | 15 | 15 | | | 15 | 5 | | | | | |
| 120 | 20 | 15 | 12 | 10 | 8 | 15 | 5 | 5 | 4 | 1 | 1 | |
| 125 | 20 | 15 | 15 | | | 10 | 5 | | | | | |
| 130 | 20 | 15 | 12 | 10 | 8 | 10 | 5 | 5 | 4 | 1 | 1 | |
| 140 | 20 | 15 | 12 | 10 | 8 | 10 | 5 | 5 | 4 | 1 | 1 | |
| 150 | 20 | 15 | 12 | 10 | 6 | 10 | 5 | 5 | 4 | 1 | 1 | |
| 160 | 20 | 15 | 12 | 10 | 6 | 10 | 5 | 5 | 4 | | 1 | |
| 170 | 20 | 15 | 12 | 10 | 6 | 10 | 5 | 5 | 4 | | 1 | |
| 180 | 20 | 15 | 12 | 10 | 6 | 10 | 5 | 5 | 4 | | 1 | |
| 190 | 20 | 15 | 12 | | 6 | 10 | 5 | 5 | 3 | | 1 | |
| 200 | 20 | 15 | 10 | 10 | 6 | 10 | 5 | 5 | 3 | | 1 | |
| 210 | | | 10 | | | | | | | | | |
| 220 | 20 | | 10 | | | | | | | | | |
| 230 | 20 | | 10 | | 6 | | 5 | | 3 | | | |
| 240 | 20 | | 10 | | | | | | | | | |
| 250 | 20 | 20 | 10 | | 6 | 10 | 5 | 5 | 3 | | 1 | |
| 260 | | | 10 | | | | | | | | | |
| 280 | | | | | | | 5 | | | | | |
| 300 | 20 | 15 | 10 | | 5 | 10 | 5 | 5 | 3 | | 1 | |

HEX SOCKET CAP SCREW ISO 4762 / JIS B1176 / DIN 912



● **Material**

SUS 316L

Stainless Steel A4



How to order or inquire: R830-DIN 912-material code diameter x length

Example: R830-DIN 912-316L 4x16

Material codes: 316L for Stainless Steel 316L

| | M3 | M4 | M5 | M6 | M8 | M10 | M12 | M14 |
|----|-----|----|-----|----|----|-----|-----|-----|
| dk | 5.5 | 7 | 8.5 | 10 | 13 | 16 | 18 | 21 |
| k | 3 | 4 | 5 | 6 | 8 | 10 | 12 | 14 |
| s | 2.5 | 3 | 4 | 5 | 6 | 8 | 10 | 12 |



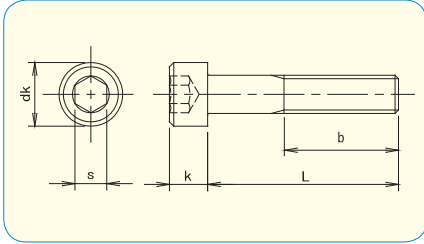
| | | pcs / Box | | | | | | |
|-------|-------|-----------|-------|-------|-------|-------|-------|------|
| L \ d | M3 | M4 | M5 | M6 | M8 | M10 | M12 | M14 |
| 4 | 500 | 500 | | | | | | |
| 5 | 500 | 500 | 300 | | | | | |
| 6 | 500 | 500 | 300 | 300 | | | | |
| 8 | 500 | 500 | 300 | 300 | | | | |
| 10 | 500 | 500 | 300 | 300 | 200 | | | |
| 12 | 500 | 500 | 300 | 300 | 200 | | | |
| 14 | 500 | 500 | 300 | 300 | 200 | | | |
| 15 | 500 | 500 | 300 | 300 | 200 | 100 | 100 | |
| 16 | 500 | 500 | 300 | 300 | 200 | 100 | 100 | |
| 18 | 500 | 500 | 300 | 300 | 200 | | | |
| 20 | 500 | 500 | 300 | 300 | 200 | 100 | 100 | |
| 25 | * 500 | 500 | 300 | 300 | 200 | 100 | 100 | 30 |
| 30 | * 500 | * 500 | * 300 | 300 | 200 | 100 | 100 | 30 |
| 35 | * 500 | * 500 | * 300 | * 300 | 200 | 100 | 100 | 30 |
| 40 | * 500 | * 500 | * 300 | * 300 | * 200 | 100 | 100 | 30 |
| 45 | * 500 | * 500 | * 300 | * 300 | * 200 | * 100 | 100 | 30 |
| 50 | * 500 | * 500 | * 300 | * 300 | * 200 | * 100 | * 100 | 30 |
| 55 | | * 500 | * 300 | * 300 | * 200 | * 100 | * 100 | |
| 60 | | * 500 | * 300 | * 300 | * 200 | * 100 | * 100 | * 30 |
| 65 | | * 500 | * 300 | * 300 | * 200 | * 100 | * 100 | |
| 70 | | * 500 | * 300 | * 300 | * 200 | * 100 | * 100 | |
| 75 | | * 500 | * 300 | * 300 | * 200 | * 100 | * 100 | |
| 80 | | * 500 | * 300 | * 300 | * 200 | * 100 | * 100 | |
| 85 | | | | * 300 | * 200 | | * 100 | |
| 90 | | | | * 300 | * 200 | * 100 | * 100 | |
| 95 | | | | * 300 | * 200 | | | |
| 100 | | | | * 300 | * 200 | * 100 | * 100 | |
| 110 | | | | | | * 100 | * 100 | |
| 120 | | | | | | * 100 | * 100 | |
| 130 | | | | | | * 100 | * 100 | |
| 140 | | | | | | * 100 | * 100 | |
| 150 | | | | | | * 100 | * 100 | |

* ... Half thread



TITAN

HEX SOCKET CAP SCREW ISO 4762 / JIS B1176 / DIN 912



How to order or inquire: R830-DIN 912-material code diameter x length

Example: R830-DIN 912-TI 4x16

Material codes: TI for Titanium

| | M3 | M4 | M5 | M6 | M8 | M10 | M12 | M16 |
|----|-----|----|-----|----|----|-----|-----|-----|
| dk | 5.5 | 7 | 8.5 | 10 | 13 | 16 | 18 | 24 |
| k | 3 | 4 | 5 | 6 | 8 | 10 | 12 | 16 |
| s | 2.5 | 3 | 4 | 5 | 6 | 8 | 10 | 14 |

● **Material** **TITAN**

pcs / Box

| L \ d | M3 | M4 | M5 | M6 | M8 | M10 | M12 |
|-------|-------|-------|-------|-------|-------|------|------|
| 6 | 200 | 200 | | | | | |
| 8 | 200 | 200 | 100 | 100 | | | |
| 10 | 200 | 200 | 100 | 100 | | | |
| 12 | 200 | 200 | 100 | 100 | | | |
| 15 | 200 | 200 | 100 | 100 | 100 | 50 | |
| 16 | 200 | 200 | 100 | 100 | 100 | 50 | |
| 20 | 200 | 200 | 100 | 100 | 100 | 50 | |
| 25 | * 200 | 200 | 100 | 100 | 100 | 50 | 30 |
| 30 | | * 200 | * 100 | 100 | 100 | 50 | 30 |
| 35 | | * 200 | * 100 | * 100 | 100 | 50 | 30 |
| 40 | | * 200 | * 100 | * 100 | * 100 | 50 | 30 |
| 45 | | | * 100 | * 100 | * 100 | * 50 | 30 |
| 50 | | | * 100 | * 100 | * 100 | * 50 | 30 |
| 55 | | | * 100 | * 100 | * 100 | * 50 | * 30 |
| 60 | | | * 100 | * 100 | * 100 | * 50 | * 30 |



* ... Half thread

● **Material · plating** Steel 12.9 / **DISGO**

pcs / Box

| L \ d | M6 | M8 | M10 | M12 | M16 |
|-------|-------|-------|------|------|------|
| 10 | 200 | 100 | | | |
| 12 | 200 | 100 | | | |
| 14 | 200 | 100 | | | |
| 15 | 200 | 100 | | | |
| 16 | 200 | 100 | 100 | | |
| 18 | 200 | 100 | | | |
| 20 | 200 | 100 | 100 | 50 | |
| 22 | 200 | 100 | | | |
| 25 | 200 | 100 | 100 | 50 | |
| 30 | 200 | 100 | 50 | 50 | 40 |
| 35 | * 200 | 100 | 50 | 50 | 40 |
| 40 | * 200 | * 100 | 50 | 50 | 30 |
| 45 | * 200 | * 100 | * 50 | 50 | 30 |
| 50 | * 200 | * 100 | * 50 | 40 | 30 |
| 55 | | * 50 | * 50 | * 40 | 25 |
| 60 | | * 50 | * 50 | * 30 | 25 |
| 65 | | * 50 | * 50 | * 30 | * 25 |
| 70 | | | * 40 | * 30 | * 20 |
| 75 | | | * 40 | * 30 | * 20 |
| 80 | | | * 40 | * 30 | * 20 |
| 90 | | | | * 25 | * 15 |
| 100 | | | | * 25 | * 15 |

How to order or inquire: R830-912-finish code diameter x length

Example: R830-912-DI 4x10

Finish codes: DI for DISGO Plated



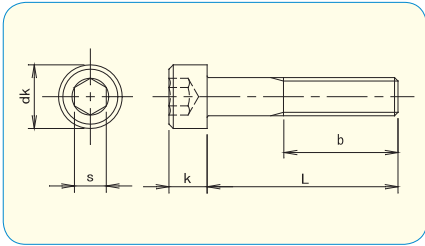
High Rustproof Plating



- No Hydrogen-Embrittlement.
- No Cr. contained.
- Special plating for High tensile Fasteners. (class 8.8 / 10.9 / 12.9)

* ... Half thread

HEX SOCKET CAP SCREW ISO 4762 / JIS B1176 / DIN 912



● **Material**
YUS-550



How to order or inquire: R830-DIN 912-material code diameter x length
 Example: R830-DIN 912-YU 4x16
 Material codes: YU for YUS-550

| | M2 | M2.5 | M3 | M4 | M5 | M6 | M8 | M10 | M12 | M16 |
|----|-----|------|-----|----|-----|----|----|-----|-----|-----|
| dk | 3.8 | 4.5 | 5.5 | 7 | 8.5 | 10 | 13 | 16 | 18 | 24 |
| k | 2 | 2.5 | 3 | 4 | 5 | 6 | 8 | 10 | 12 | 16 |
| s | 1.5 | 2 | 2.5 | 3 | 4 | 5 | 6 | 8 | 10 | 14 |

| | | pcs / Box | | | | | | | | | |
|-------|------|-----------|--------|-------|-------|-------|-------|-------|------|------|--|
| L \ d | M2 | M2.5 | M3 | M4 | M5 | M6 | M8 | M10 | M12 | M16 | |
| 3 | 2000 | | | | | | | | | | |
| 4 | 2000 | 2000 | | | | | | | | | |
| 5 | 2000 | 2000 | 2000 | | | | | | | | |
| 6 | 2000 | 2000 | 2000 | 1000 | | | | | | | |
| 8 | 2000 | 2000 | 2000 | 1000 | 500 | | | | | | |
| 10 | 2000 | 2000 | 1000 | 1000 | 500 | 200 | | | | | |
| 12 | 2000 | 2000 | 1000 | 500 | 200 | 200 | 200 | | | | |
| 15 | 2000 | 2000 | 1000 | 500 | 200 | 200 | 200 | 100 | | | |
| 16 | | | 1000 | 500 | 200 | | | | | | |
| 20 | | 2000 | 1000 | 500 | 200 | 200 | 200 | 100 | | | |
| 25 | | | * 1000 | 500 | 200 | 200 | 100 | 100 | | | |
| 30 | | | * 1000 | * 500 | 200 | 200 | 100 | 100 | 100 | | |
| 35 | | | | * 500 | * 200 | * 100 | 100 | 100 | | | |
| 40 | | | | * 500 | * 200 | * 100 | 100 | 100 | 100 | 50 | |
| 45 | | | | | * 100 | * 100 | * 100 | * 100 | | | |
| 50 | | | | | * 100 | * 100 | * 100 | * 100 | 50 | | |
| 60 | | | | | | | | | * 50 | 25 | |
| 65 | | | | | | | | | | * 25 | |
| 70 | | | | | | | | | * 50 | | |

* ... Half thread

HIGH STRENGTH
 YUS-550 has enough hardness to the core, the thread is able not to be transformed and gain high fastening.

HIGH TOUGHNESS
 Generally, stainless which has high tensile strength or hardness doesn't have toughness. But YUS-550 has high toughness with keeping these performance.

HIGH RUSTPROOF
 YUS-550 has rustproof more than the equal to SUS XM7 / SUS 304.



Handsontec.com

We have the parts for your ideas

HandsOn Technology provides a multimedia and interactive platform for everyone interested in electronics. From beginner to diehard, from student to lecturer. Information, education, inspiration and entertainment. Analog and digital, practical and theoretical; software and hardware.



open source
hardware

HandsOn Technology support Open Source Hardware (OSHW) Development Platform.

Learn : Design : Share

www.handsontec.com



The Face behind our product quality...

In a world of constant change and continuous technological development, a new or replacement product is never far away – and they all need to be tested.

Many vendors simply import and sell without checks and this cannot be the ultimate interests of anyone, particularly the customer. Every part sell on Handsotec is fully tested. So when buying from Handsotec products range, you can be confident you're getting outstanding quality and value.

We keep adding the new parts so that you can get rolling on your next project.



www.handsontec.com

[Breakout Boards & Modules](#)



[Connectors](#)



www.handsontec.com

[Electro-Mechanical Parts](#)



www.handsontec.com

[Engineering Material](#)



www.handsontec.com

[Mechanical Hardware](#)



[Electronics Components](#)

P



www.handsontec.com

[Power Supply](#)



[Arduino Board & Shield](#)

Tools & Accessory



www.handsontec.com

[Tools & Accessory](#)