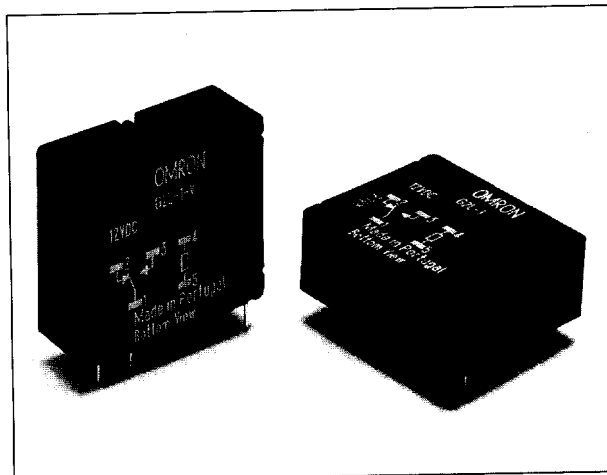


Miniature High Switching Capacity PCB Relay

- Available in horizontal (flatpack) or vertical mounting styles.
- Plastic sealed.
- Conforms to VDE0110 Group C/250 for clearance and creepage distance.
- Approval to VDE, SEV, UL and CSA Standards.
- 2.5mm terminal pitch.



Ordering Information

Standard

Contact form	Flat	Vertical
SPDT	G2L-1	G2L-1-V

Note: When ordering, add the rated coil voltage to the model number.
 Example: G2L-1 12 VDC
 Rated coil voltage

Model Number Legend:

G2L - - - VDC
 1 2 3

1. **Contact Form**
 1: SPDT

2. **Appearance**
 None: Flat type
 V: Vertical type

3. **Coil Voltage**
 6, 12, 24, 48 VDC

Specifications

Coil Ratings

Rated voltage	6 VDC	12 VDC	24 VDC	48 VDC
Rated current	75 mA	36.4 mA	20 mA	10.2 mA
Coil resistance	80 Ω	330 Ω	1200 Ω	4700 Ω
Must operate voltage	70% max. of rated voltage			
Must release voltage	10% min. of rated voltage			
Max. voltage	110% (at 20°C) of rated voltage			
Power consumption	Approx. 450 mW			

Note: 1. The rated current and coil resistance are measured at a coil temperature of 20°C with a tolerance of +15%.

Contact Ratings

Item	Resistive load (cosφ = 1)	Inductive load (cosφ = 0.4; L/R = 7 ms)
Rated load	8 A at 230 VAC; 8 A at 24 VDC	5 A at 230 VAC; 5 A at 24 VDC
Contact material	AgCdO	
Rated carry current	8 A	
Max. switching voltage	250 VAC, 250 VDC	
Max. switching current	AC: 8 A; DC: 8 A	AC: 5 A; DC: 5 A

Item	Resistive load ($\cos\phi = 1$)	Inductive load ($\cos\phi = 0.4$; L/R = 7 ms)
Max. switching capacity	2,000 VA, 200 W	1,000 VA, 120 W
Min. permissible load	100 mA at 24 VDC	

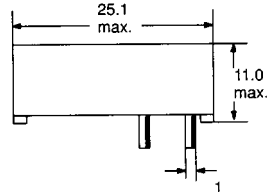
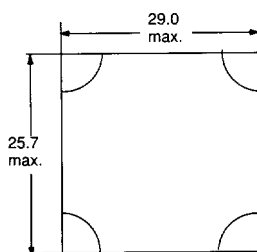
■ Characteristics

Operate time	15 ms max.
Release time	10 ms max.
Max. operating frequency	Electrical: 400 operations/hr (at maximum switching capacity)
Dielectric withstand voltage	4 kVAC, 50/60 Hz for 1 min between coil and contacts
Vibration resistance	Destruction: 10 to 55 Hz, 1.5-mm double amplitude Malfunction: 10 to 55 Hz, 0.8-mm double amplitude
Shock resistance	Destruction: 1,000 m/s ² (approx. 100G) Malfunction: 100 m/s ² (approx. 10G)
Life expectancy	Mechanical: 10,000,000 operations min. Electrical: 100,000 operations min.
Ambient temperature	Operating: -40°C to 70°C (with no icing)
Ambient humidity	Operating: 45% to 85%
Weight	Approx. 20 g

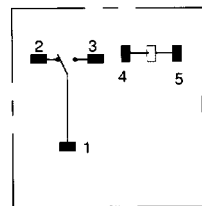
Note: The data shown above is at initial value.

Dimensions

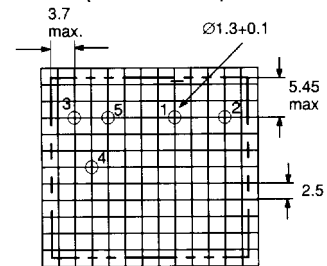
G2L-1



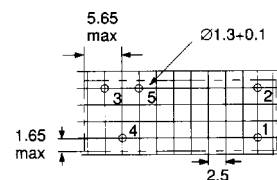
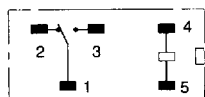
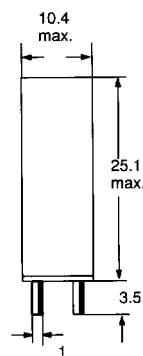
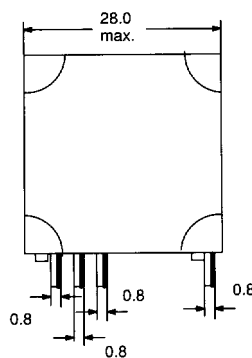
Terminal Arrangement/ Internal Connections (Bottom View)



Mounting hole layout (Bottom View)



G2L-1-V



ALL DIMENSIONS SHOWN ARE IN MILLIMETRES.

To convert millimetres into inches, multiply by 0.03937. To convert grams into ounces, multiply by 0.03527.

Cat. No. C-G2L-001 In the interest of product improvement, specifications are subject to change without notice

OMRON

LEADERS IN ELECTRONIC COMPONENTS

OMRON Electronics Ltd.

1, Apsley Way,
Staples Corner,
London NW2 7HF
Phone: (081) 450 4646 Fax: (081) 450 8087

HandsOn Technology

<http://www.handsontec.com>

creativity for tomorrow's better living...

HandsOn Tech provides a multimedia and interactive platform for everyone interested in electronics. From beginner to diehard, from student to lecturer... Information, education, inspiration and entertainment. Analog and digital; practical and theoretical; software and hardware...



HandsOn Technology support Open Source Hardware(OSHW) Development Platform.

Learn : Design : Share

www.handsontec.com



www.handsontec.com



www.handsontec.com



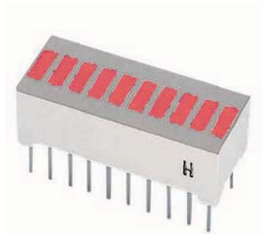
www.handsontec.com

www.handsontec.com

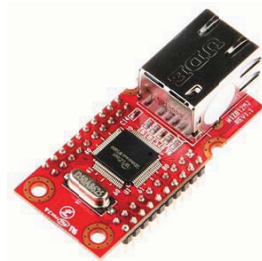
Welcome to Handsontec Store



LCD+Keyboard Shield



10-Segments LED Bar Display



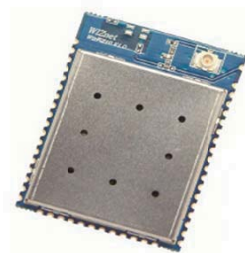
Ethernet Module



Arduino Uno



MicroSD Breakout Board



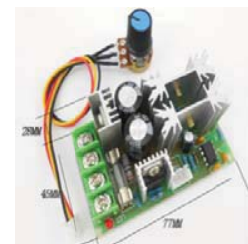
WiFi Module



20x4 LCD Display Module



Stepper Motor Driver



PWM Motor Speed Controller



www.handsontec.com

Breakout Board & Modules



www.handsontec.com

Integrated Circuits



www.handsontec.com

Discrete Parts



www.handsontec.com

Assembled Kits



www.handsontec.com

Connectors